

LEGAL DESCRIPTION
PUMP HOUSE PARCEL
CITY OF DANIA BEACH, BROWARD COUNTY, FLORIDA

A portion of "DANIA GOLF COURSE", according to the plat thereof as recorded in Plat Book 32, Page 17 of the Public Records of Broward County, Florida and being more particularly described as follows:

COMMENCING at the Southwest corner of said "DANIA GOLF COURSE";

THENCE North 87°40'48" East on the South line of said "DANIA GOLF COURSE", a distance of 537.62 feet;

THENCE North 16°56'53" West, a distance of 210.61 feet; to the POINT OF BEGINNING

THENCE North 82°32'45" West, a distance of 25.81 feet;

THENCE North 19°38'20" West, a distance of 62.83 feet;

THENCE North 70°21'40" East, a distance of 49.45 feet;

THENCE South 19°38'20" East, a distance of 53.99 feet;

THENCE South 07°27'15" West, a distance of 30.39 feet;

THENCE North 82°32'45" West, a distance of 14.19 feet; to the POINT OF BEGINNING;

Said lands lying in City of Dania Beach, Broward County, Florida and containing an area of 3,496 square feet (0.080 acres), more or less.

SURVEYOR'S NOTES:

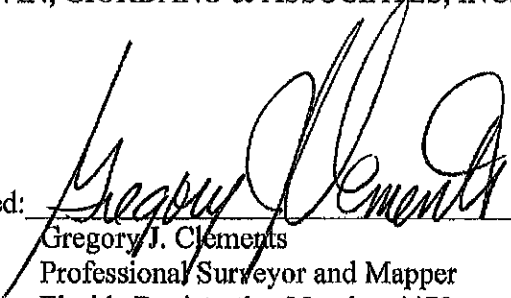
1. Unless this Sketch of Legal Description bears the signature and raised seal of a Florida Licensed Surveyor and Mapper, this map is for informational purposes only and is not valid. Additions and deletions made to the face of this sketch and description will make this Sketch of Legal Description invalid.
2. Lands shown hereon were not abstracted by the surveyor for rights-of-way, easements, ownership or other instruments of record.
3. Bearings shown hereon are relative to the South line of said "DANIA GOLF COURSE", having an assumed bearing of North 87°40'48" East.
4. The description contained herein does not represent a field boundary survey.

Prepared By:
CALVIN, GIORDANO AND ASSOCIATES, INC.
1800 Eller Drive, Suite 600
Fort Lauderdale, Florida 33316
September 9, 2009; Revs September 29, 2011

5. Unless otherwise noted hereon, record values and field measured values are in substantial agreement.
6. Unless otherwise shown hereon, no encroachments encumber described subject property.
7. Calvin Giordano & Associates Inc. Certificate of Authorization Number is L.B. 6791.

CALVIN, GIORDANO & ASSOCIATES, INC.

Signed: _____


Gregory J. Clements
Professional Surveyor and Mapper
Florida Registration Number 4479

DATE: _____

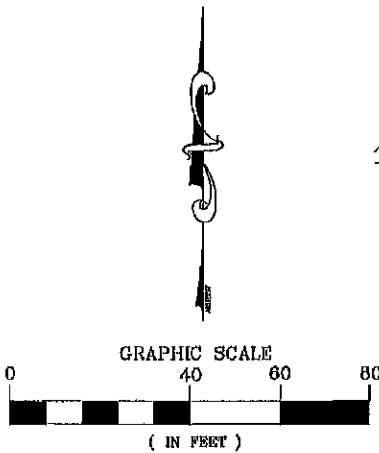
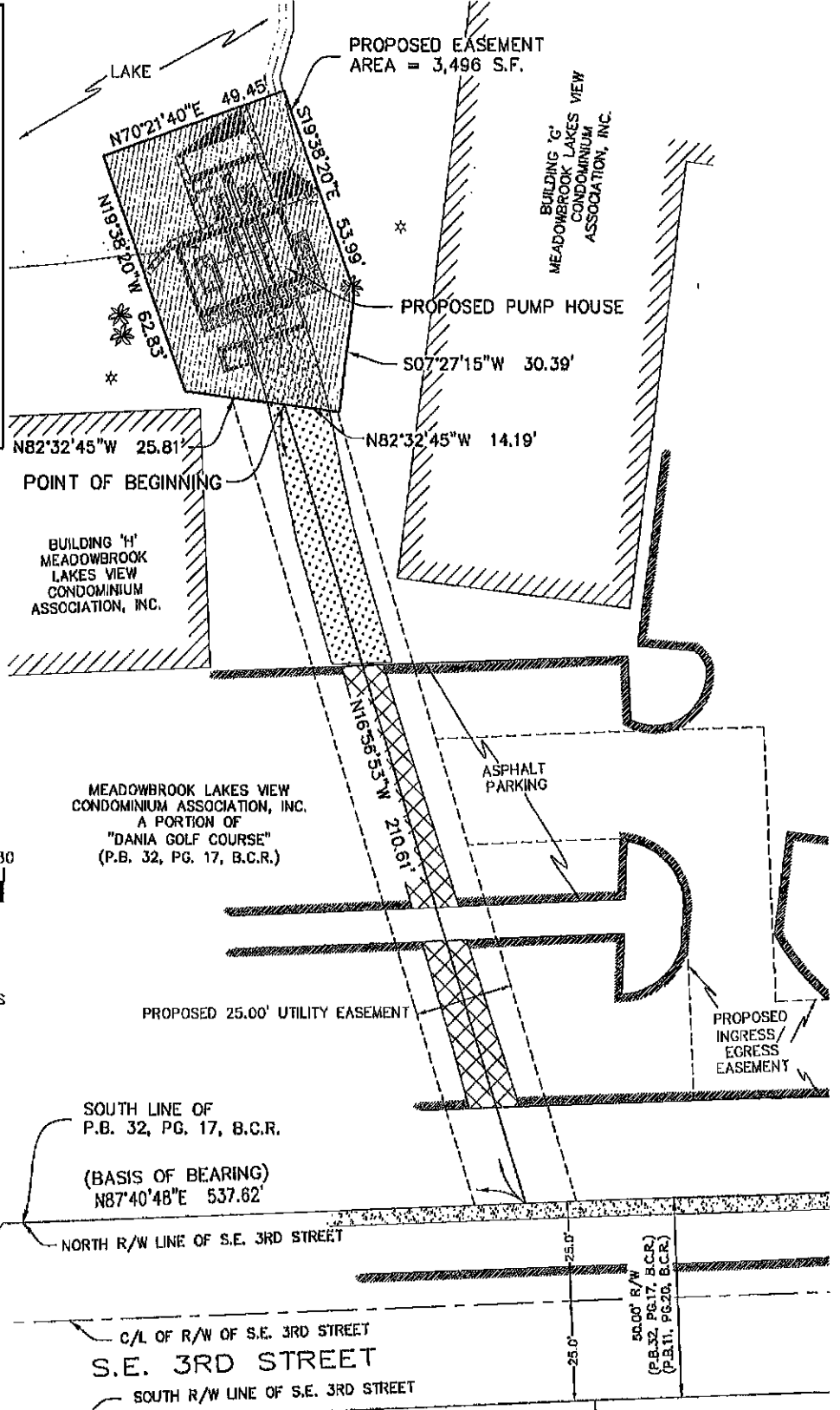
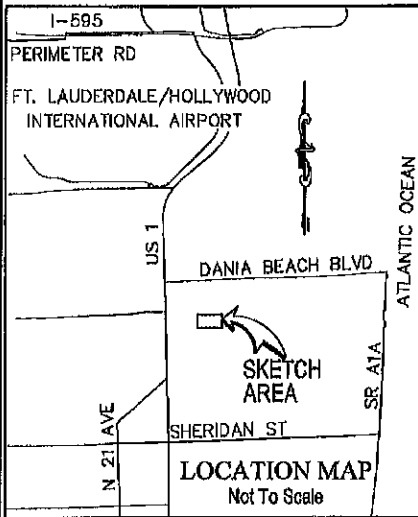
9-29-2011

Prepared By:
CALVIN, GIORDANO AND ASSOCIATES, INC.
1800 Effer Drive, Suite 600
Fort Lauderdale, Florida 33316
September 9, 2009; Revs September 29, 2011

P:\Projects\2009\092847 Meadowbrook Lakes View Condo\Survey\Legal Descriptions\092847-V-SD-ESMT-PUMP.doc

Sheet 2 of 3

SKETCH OF LEGAL DESCRIPTION PUMP HOUSE PARCEL



LEGEND:

- BCR = BROWARD COUNTY RECORDS
- C/L = CENTERLINE
- D = CENTRAL ANGLE
- L = ARC LENGTH
- ORB = OFFICIAL RECORDS BOOK
- PB = PLAT BOOK
- PG = PAGE
- R = RADIUS
- R/W = RIGHT-OF-WAY

POINT OF COMMENCEMENT
S.W. CORNER OF
DANIA GOLF COUSE
(P.B. 32, PG. 17, B.C.R.)

SOUTH LINE OF
P.B. 32, PG. 17, B.C.R.

(BASIS OF BEARING)
N87°40'48"E 537.62'

NORTH R/W LINE OF S.E. 3RD STREET

C/L OF R/W OF S.E. 3RD STREET
S.E. 3RD STREET

SOUTH R/W LINE OF S.E. 3RD STREET

Revision: September 29, 2011

GA Calvin, Giordano & Associates, Inc.
EXCEPTIONAL SOLUTIONS
1800 Eller Drive, Suite 600, Fort Lauderdale, Florida 33316
Phone: 954.821.7781 Fax: 954.821.8807
Certificate of Authorization 8791

**MEADOWBROOK LAKES
CITY OF DANIA BEACH
BROWARD COUNTY, FLORIDA**

SCALE 1"=40.0'	PROJECT No. 09-2847	SHEET 3
DATE 09-02-09	CAD FILE SEE LEFT	3

P:\Projects\2009\092847 Meadowbrook Lakes View Condo\Survey\SKETCH\092847-V-SD-PUMPHOUSE.dwg Sep 29, 2011 - 1:33pm